

2D LAYOUTS

SCOPE

O2 MODULAR OFFICE SYSTEM | O2 I-BENCH STATIONS
THIN BASE | GRADE 2 FINISHES

SUITE A - 1ST FLOOR

[3] 10' X 9' X 107"H NON-POWERED

MODULAR WALL OFFICES W/ HINGED DOOR

* 4'H FROSTED FILM STRIP APPLIED ON GLAZED PANELS

[4] 2' X 5' X 39"H + 13"H SCREENS POWERED
STATIONS W/

[1] MOBILE BOX-BOX-FILE PEDESTAL W/CUSHION /EA

SUITE B - 1ST FLOOR

[3] 10' X 10' X 107"H NON-POWERED

MODULAR WALL OFFICES W/ HINGED DOOR

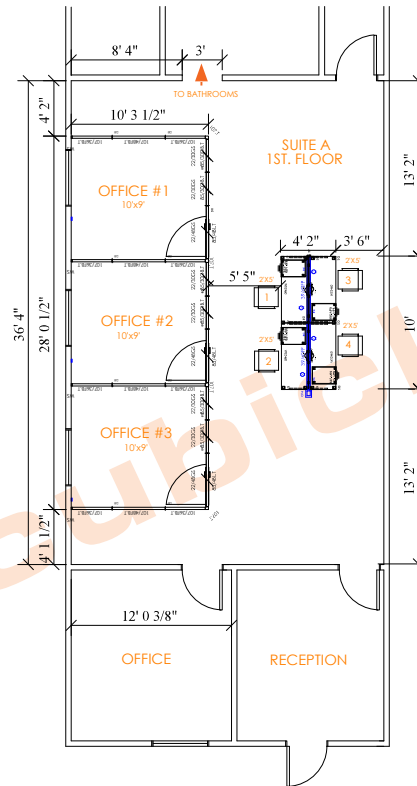
* 4'H FROSTED FILM STRIP APPLIED ON GLAZED PANELS

SUITE B - 2ND FLOOR

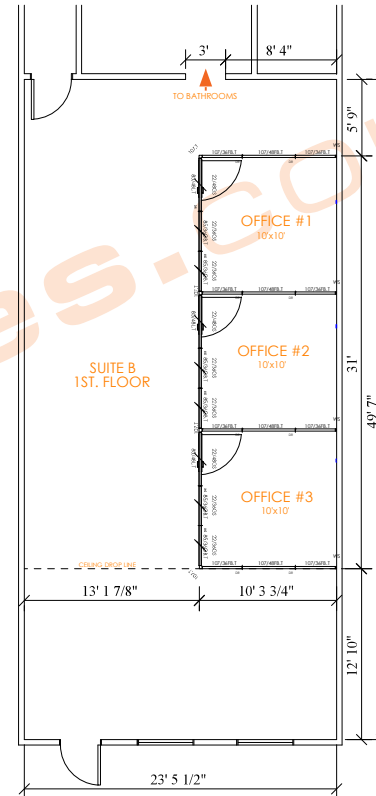
[2] 12' X 11'-8" X 103"H NON-POWERED

MODULAR WALL OFFICES W/ [3] HINGED DOORS

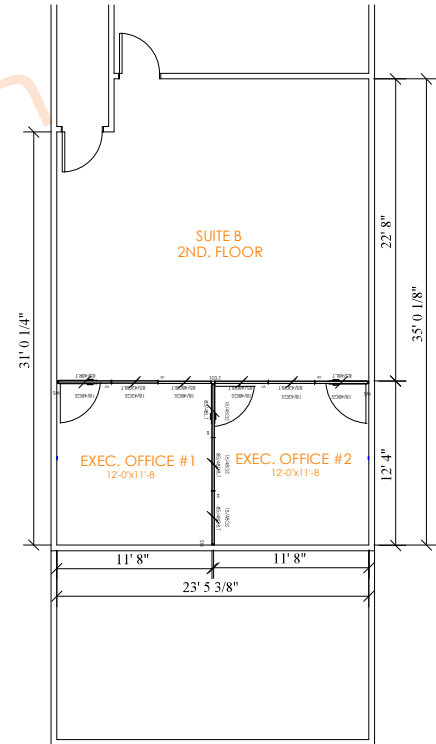
* 4'H FROSTED FILM STRIP APPLIED ON FRONT GLAZED
PANELS ONLY



SUITE A - 1ST FLOOR



SUITE B - 1ST FLOOR



SUITE B - 2ND FLOOR

NEW FURNITURE
POWERED ELEMENTS
NOTES